



# BRIEF INFORMATION

## Jumbo LED high beam headlamp

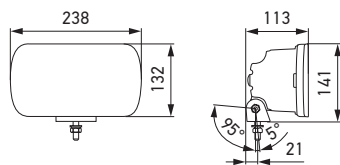
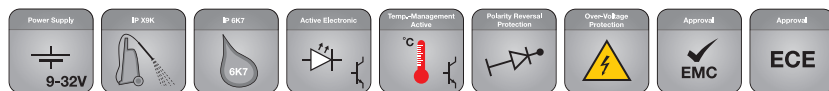


## PRODUCT FEATURES

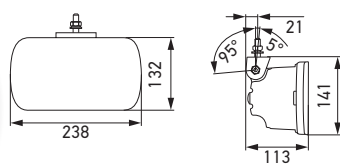
### Jumbo LED - 100 % LED technology:

- Auxiliary high beam headlamp with state-of-the-art optics and impressive LED light pattern for individual style
- Edge light technology intensifies the characteristic contours of the highly recognizable LED position light.
- Immediate response for attention-grabbing headlight flashing
- Impact-resistant housing made of high-quality thermoplastic material
- Sturdy fastening bracket made of zinc-coated sheet steel with wide adjustment range
- Electronics components qualified according to automotive standard
- Multi-voltage: suitable for 12 V and 24 V rated voltage
- High beam with reference number 25 and with position light
- ECE type-approved (ECE R149 high beam, ECE R148 position light, ECE R10 EMC)
- Weight 980 g (significantly lower weight than diecast aluminium housings of comparable size)
- Particularly energy-efficient and fuel-saving:
  - Power consumption at 12 V: position light 1.3 W and high beam 8 W
  - Power consumption at 24 V: position light 2.7 W and high beam 8 W

# PROGRAMME OVERVIEW



Upright mounting  
Tilt angle - 5° to - 95°



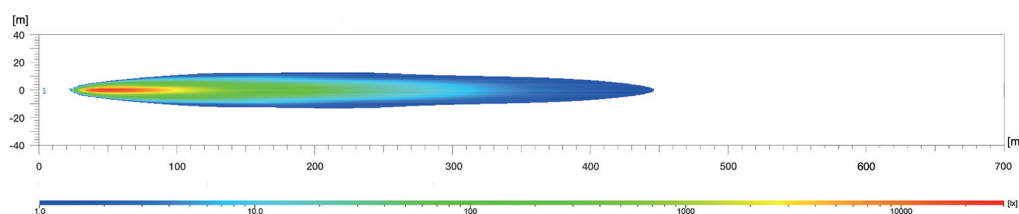
Pendant mounting  
Tilt angle - 5° to - 95°

- LED high beam headlamp with LED position light
- With 3-pin connecting cable 800 mm (with open ends)
- Attachment material
- Installation instructions
- Protection classes: IP X9K, IP 6K7

Description	Part number
Jumbo LED high beam headlamp, upright (ECE Ref. 25) multi-voltage 12 / 24 V	1FE 016 773-001
Jumbo LED high beam headlamp, pendant (ECE Ref. 25) multi-voltage 12 / 24 V	1FE 016 773-011

## LIGHT DISTRIBUTION

Jumbo LED, reference number 25



The light distribution shows 2 operational headlamps.

### Lux is the unit of illuminance.

It indicates the luminous flux that meets a specific surface from the light source. One such example is the way that an office should be illuminated with at least 500 Lux; the human eye can still recognise the letters in a newspaper without any problems at 1 Lux. The values under the Lux bar indicate where the appropriate illuminance is achieved on the light distribution diagrams.

### Ref. 25:

The reference number (Ref.) is a value that refers to high beam headlamps. Under ECE regulations, this reference number may not exceed the upper limit of 100 per vehicle. This figure includes the two values for the standard high beam (left and right headlamp) plus those of any other high beam headlamps that are mounted. The appropriate value is engraved on the cover lens of each approved headlamp.



See the light!

Auxiliary headlamps from HELLA. The right light for every situation. Try them out online now!

[www.hella.com/upc](http://www.hella.com/upc)

[www.hella.com/truck](http://www.hella.com/truck)

[www.hella.com/offroad](http://www.hella.com/offroad)

[www.hella.com/eliver](http://www.hella.com/eliver)